

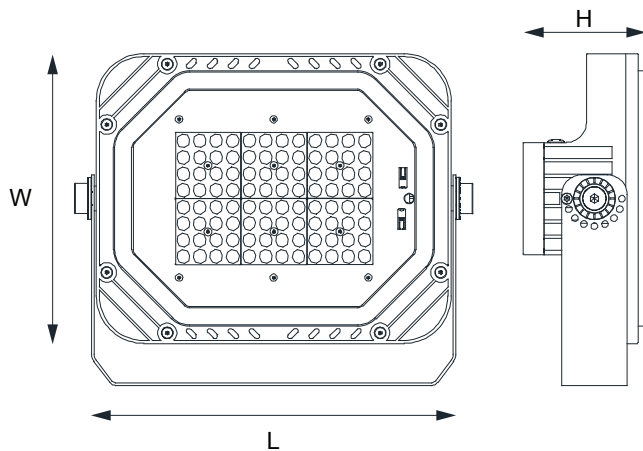
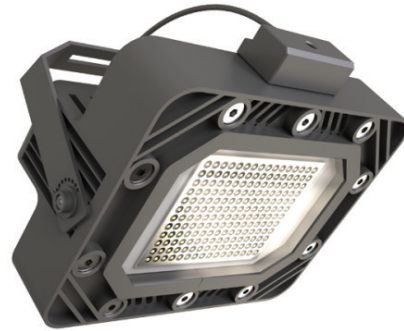
# ARIZONA



Universal floodlighting is intended to illuminate for areas of common usage, with the perfect optical parameters. Improved system of radiator is ensure quality of module in optimal operation for all guaranteed lifetime.

## SPECIFICATION

Housing: Pressure die-cast aluminum alloy with polyester powder paint  
 Beam angles: 25°; 60°; 90°; 75x135°  
 Housing color: Black, Gray, RAL  
 IES protection classes: Class I  
 Color temperature, K: 3000K - 6500K  
 Control system: Switch On\Off  
 Input voltage, V: 220V  
 Ingress Protection Rating, IP: IP66  
 Color rendering index, Ra: >70  
 Lighting efficiency: >140 Lm/W  
 Power factor (PF): >0.95  
 Operating temperature: -40°C ~ +50°C  
 Guaranteed lifetime, hours: 75 000h  
 Additional option: Motion sensor



Article	Name	Power, W	Dimensions, mm	Input voltage, V	Beam angles, degrees	Color temperature, K	Weight, kg
786010010	ARIZONA 30W 220V IP66	30W	185x148x69	220V	25°; 60°; 90°; 75x135°	3000K-6500K	1.6kg
786010020	ARIZONA 60W 220V IP66	60W	303x246x93	220V	25°; 60°; 90°; 75x135°	3000K-6500K	4.4kg
786010030	ARIZONA 80W 220V IP66	80W	303x246x93	220V	25°; 60°; 90°; 75x135°	3000K-6500K	4.7kg
786010040	ARIZONA 100W 220V IP66	100W	358x309x110	220V	25°; 60°; 90°; 75x135°	3000K-6500K	7.1kg
786010050	ARIZONA 150W 220V IP66	150W	358x309x110	220V	25°; 60°; 90°; 75x135°	3000K-6500K	7.8kg
786010060	ARIZONA 200W 220V IP66	200W	437x352x126	220V	25°; 60°; 90°; 75x135°	3000K-6500K	9.7kg